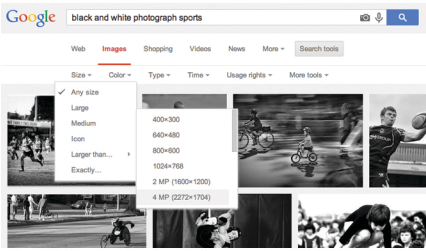


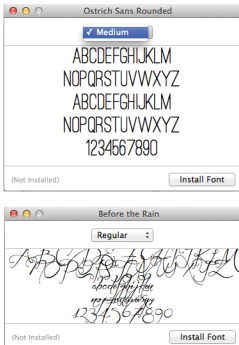
Page Set Up Information.

1) WHEN YOU OPEN A NEW FILE IN PHOTOSHOP, THESE ARE THE SETTINGS YOU SHOULD USE. PLEASE PAY SPECIAL ATTENTION TO THE SIZE, RESOLUTION AND COLOUR MODE.



Background Image

2) YOUR BACKGROUND IMAGE SHOULD BE BLACK AND WHITE, AND PREFERABLY WITH A MOSTLY WHITE BACKGROUND. WHEN SEARCHING FOR APPROPRIATE IMAGES, USE THE "SEARCH TOOLS" FUNCTION IN GOOGLE AND CHOOSE AN IMAGE SETTING OF "LARGER THAN" 4MP.



Fonts

3) YOU WILL USE "BEFORE THE RAIN" (FONTSPACE.COM) FOR THE FIRST WORD OF ALL TITLES AND "OSTRICH SANS ROUNDED" (FONTSQUIRREL.COM) FOR THE SECOND WORD. ALL BODY TEXT WILL BE "NIXIE ONE" (GOOGLE.COM/FONTS) AND 12PT. THE FIRST LETTER OF THE TITLE WILL BE 100PT AND THE REMAINING LETTERS WILL BE 60PT.



Photo Masks

4) YOU WILL CREATE A CLIPPING MASK USING THE ROUNDED RECTANGULAR SHAPE TOOL FOR ALL PHOTOS ON THE PAGE. YOU WILL USE THE SETTINGS BELOW TO ENSURE CONSISTENCY.



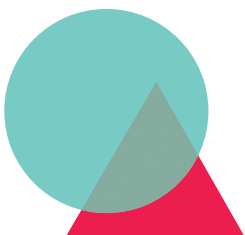
Style Lines

5) USE THE PENCIL TOOL TO TRACE OVER YOUR BACKGROUND IMAGE IN ILLUSTRATOR. YOU MUST USE THE SETTINGS BELOW WHEN USING THE PENCIL TOOL.



Colour Palette

6) EVERY SINGLE PIECE OF DESIGN MUST FOLLOW THIS COLOUR PALETTE, WITH THE EXCEPTION OF PHOTOGRAPHS GIVEN TO YOU BY THE YEARBOOK COMMITTEE. YOU MAY ALSO USE WHITE AND BLACK.



Decorative Shapes

7) PERFECT CIRCLES AND TRIANGLES MAY BE USED SPARINGLY AS DECORATIVE ELEMENTS ON YOUR PAGE. THEY CANNOT HAVE A STROKE. OPACITY CAN BE ALTERED DOWN TO 80% ONLY.